

General information solar shading fabrics

Guillaume Janssen (EN)

Tel: 038-4670010
E-mail: info@gjbv.nl
Website: www.gjbv.nl

TABLE OF CONTENTS

1. General information	03
2. Fabric properties	03-05
3. General information regarding fabrics for systems in the MW Series	06-07
4. Additional information	08

1. General information

In this section you will find general information with regards to the fabric characteristics in GJ systems and it can also be used for loose fabrics.

- GJ always aims to supply the best possible fabric appearance. Most situations the fabrics will look better than shown here, but please note that in some situations it can also be worse due to various reasons. For example an opaque fabric can look worse than a shading/screen fabric due to the light reflection instead of light penetration this can also be the case with different colours.
- Fabrics can always show some waviness or wrinkles, 100% flat fabrics – especially with larger and/or shaped systems – are not likely to be achieved.
- Horizontal systems can show a “sag” of the fabric, the amount of this depends on the size, system type, fabric type, etc.
- Larger sized systems can have horizontal weld(s), shaped systems will have additionally also diagonal welds to divide the force through the fabric.
- For official values and properties of the fabric(s) we refer to the information provides by the fabric manufacturers;

Mermet: <https://www.sunscreen-mermet.com/>
Helioscreen: <https://www.helioscreen.com/en/home/>
SergeFerrari: <https://www.sergeferrari.com/>
Copaco: <https://www.copaco.be/>

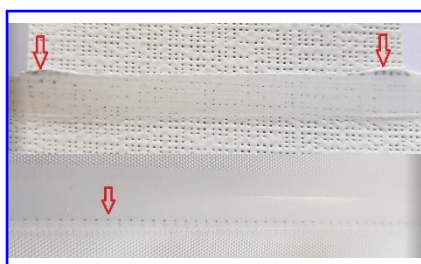
2. Fabric properties



Horizontal welding seam

Depending on the fabric requirement, the size and type of the system there may be one or multiple seams. This will create a slightly different look. GJ will always try to avoid seams.

After rolling up and down some folds can appear from the horizontal welding seam to the fabric tube and the bottom-bar.



Opaque layer

With darkening fabric the opaque layer can be pushed out of the weld and become visible, especially on white fabric this is more visible than other colours.



Glossy effect

The horizontal welding seam can give a glossy appearance.



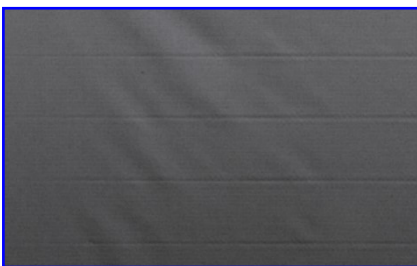
Combined fabrics

Depending on how the light falls onto the fabric one side can light up darker than the other side of the welding seam.



Waviness of the fabric

The fabric and zip are laying over each other, this creates a different thickness. When the blind being rolled up around the tube it can create some creases/waves due to the different thickness. Also the weather condition can be of influence.



Horizontal marks on the fabrics

These marks are created when the blind being rolled up around the tube. Especially when the fabric is kept rolled up for a longer period of time. Heat or sun can improve the fabric smoothness.



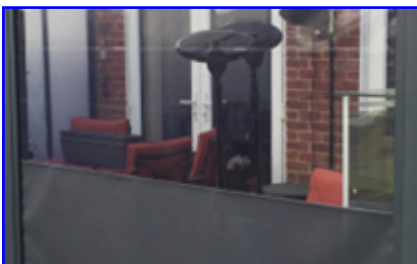
Diagonal marks

Diagonal marks from rolling onto the fabric tube, may be visible on the fabric.



"V" shape in the fabric

The fabric tube or the bottom-bar can bend, this can result in the "V" shape in the fabric. This is more noticeable with larger/wider systems.



Waviness of the fabric with a transparent crystal (PVC) screen

Both fabrics have a different expansion. With temperature differences (cold or warm) it can result in waviness due the difference expansion.

General information solar shading fabrics

Guillaume Janssen (EN)



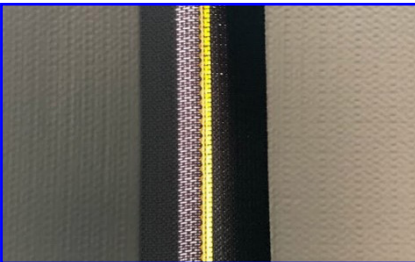
Transparent crystal screen

The clear PVC crystal screen is more sensitive to dirt and scratches, over time this will influence the appearance of the fabric.



Different type of zip seal colour

We have black, white and grey zip seal coloured zipper. Depends on the type/colour of the fabric which type of zipper we use.



Translucency of the zip seal

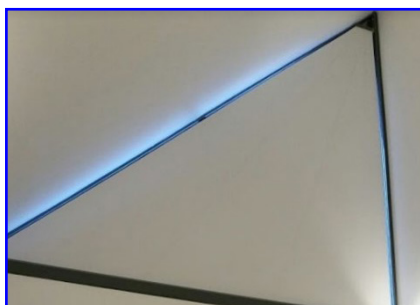
In combination with darkening fabric the zipper allows some light to go through. On the photo we have a grey and black zip seal, as you can see the black zip seal allows less light to go through. The white zip seal (not showing on the photo) will be the most translucent, therefore with opaque fabric we will always use the black zipper as a standard.



3. General information regarding fabrics for systems in the GJ - MW Series

Screens from our GJ - MW Series can only be equipped with fabrics from the Serge Ferrari collection. This is due to the diagonal stability of these fabrics, which is essential for systems in the MW Series.

Soltis Perform 92:	Ca. 4% OF	Standard fabric
Soltis Opaque B92	0% OF (100.000 Lux)	Darkening or Opaque fabric (surcharge applicable)



Darkening level

Systems from the MW Series equipped with darkening fabric (SergeFerrari Soltis Opaque B92) will have a darkening level which is comparable with a standard roller blind. The picture is without the darkening profiles of 100 mm.



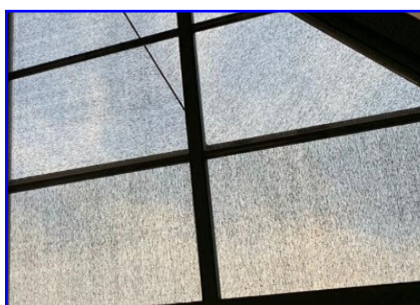
Darkening Profiles

The picture is with darkening profiles of 100 or 120 mm. Please note that these profiles will only cover the gap and will not completely block all the light.



Diagonal welding seams

The diagonal welding seams are there to create extra stability. The horizontal fibreglass strip is welded onto the fabric with a bearing wheel at the height of the shortest track.



Weaving direction

In order to weld the fabric we have to rotate the angle side. This gives a different appearance looking from inside to the outside.

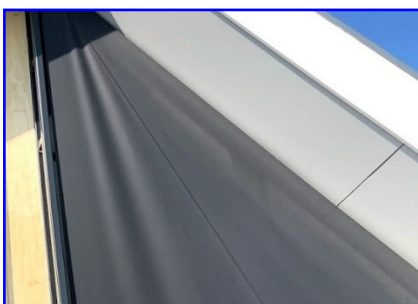
General information solar shading fabrics

Guillaume Janssen (EN)



Curling edge of the fabric

Shaped systems can have a curl on the angled side of the fabric.



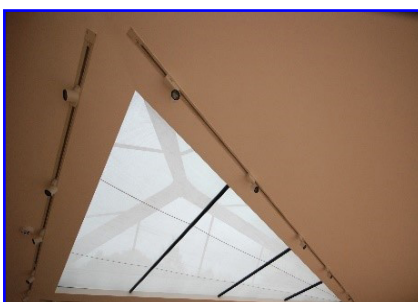
Diagonal tension

Due to the high tension in the systems it is possible that marks or waviness are visible.



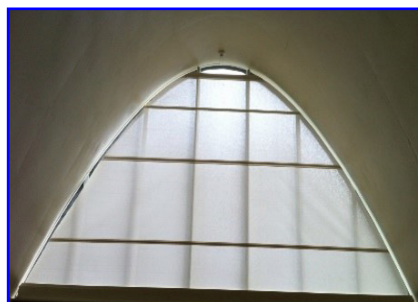
Fabric deflection

With large sizes the fabric shows deflection due to the weight of the fabric.



Fabric support rollers

We advise to use fabric support rollers with large sizes, to prevent too much deflection of the fabric.



Horizontal fibreglass strip

Depends on the system type and size, we apply several horizontal fibreglass strips welded in a pocket.



4. Additional information

“Blackout” of volledige verduistering”

The word “blackout” is in Guillaume Janssen not allowed to be used anymore, this due to the un achievability of a “total blackout”. It is simply not possible to completely blackout with any type of system.

At this moment we use the word “darkening” (this may possibly be changed in the near future), it is important to set the expectation level of the customer right and inform the client that a “blackout” or “complete darkening” is not possible to achieve.

Stretching, expansion and/or shrinkage of the fabric:

Depending the fabric choice, system size or system type the fabric can be subject to either stretching, expanding or shrinkage. This can result for example in a movement of limits, more or less wrinkling, etc. With every maintenance check it is required to check the condition of the fabric and act when necessary. For example long or tall systems can the fabric stretch in such way that the motor limits needs to be reset (tensioned systems cannot run too far against the return pulley and gravity systems always needs to “hang” for an optimum fabric tension/smoothness and life expectancy).

Cleaning:

- Remove dust, dirt, leaves or other unwanted items with vacuum cleaner or compressed air.
- Do not scrub or use solvents or any abrasive substance that might damage the coating or the fabric.
- Clean with a sponge or soft brush dipped in water.
- Leave the system (fabric) out until completely dry.
- Profiles and fabric can be considered to be treated with wax to extend the lifetime.
- For cleaning of the fabrics, we refer to the instructions and specifications of the fabric supplier(s).

External operation (if applicable):

- Automatically operated systems needs be equipped with wind-, rain and temperature sensor.
- If the fabric gets wet before the system is retracted the system/fabric can be rolled-up, however do not allow the fabric to stay rolled up longer than 2 days – stains and moisture marks can appear if the fabric remains rolled-up longer.
- The systems are not allowed to be operated during freezing temperatures due to possible freezing of wet fabrics.
- The maximum wind force allowed depends on the system type, application and use.

Manufacturer:

All fabrics are made up by Guillaume Janssen and processed in completely assembled systems.

Guillaume Janssen Nederland B.V. / Guillaume Janssen Global B.V.

Guillaume Janssen is member of the British Blind & Shutter Association.



Disclaimer:

This document has been compiled with the utmost care, and Guillaume Janssen strives to provide accurate and up-to-date information. However, some of the information may be outdated, incomplete, or incorrect. No rights can be derived from the information in this document. **Our general terms and conditions apply to all our products and services.**





info@gjbv.nl | 038 - 4670010

Braunstraat 1 | 8013 PR Zwolle NL

www.gjbv.nl